



# Taylor Cabinet Door Company

## Instructions for Measuring New Cabinet Doors and Cabinet Refacing materials

Print the following instructions and follow the simple steps below. The true value of our system over all the others is that we offer a **pre-cut refacing kit**. Whether you are skilled in cabinet refacing or never done a reface before the value of our kits is the installation process has been simplified. This is done by having the materials custom **pre-cut** for your project; **reducing the work, skill and tools needed to complete it**. If you would like to get a **free quote first**, call us 1-800-852-7087 anytime 24/7 talk to a real person (one of our expert consultant's); by simply answering a few questions they can give you an estimated over the phone.



*Example of Re-facing Kit*

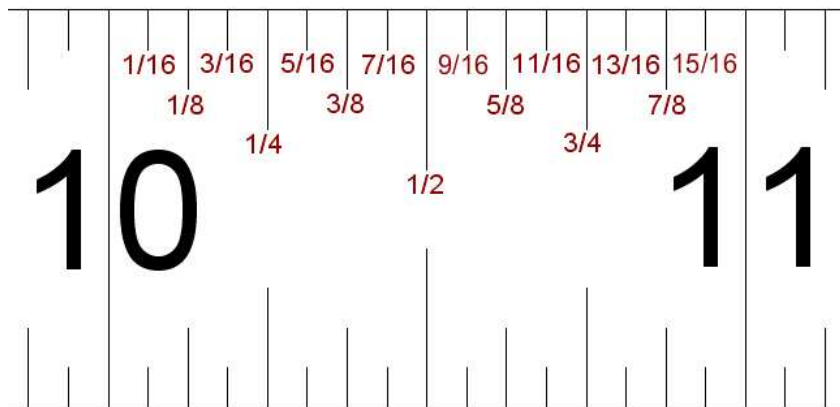


*Makes installation a breeze*

### Materials needed for Measuring

- Measuring Worksheets - Doors, Drawers, Panels, Veneers & moldings sheets (enclosed worksheets below)
- Labeling Tags
- Tape Measure
- Pen or Pencil
- Small Step Ladder
- Digital Camera (Optional)

All your measurements will need to be in inches and fractions of an inch and to the nearest 1/16". If you are not familiar with reading a tape measure to 1/16" and you need a little help see the illustration below.



**Reading the fractions on a standard tape measure:** There are 15 lines between the whole numbers. Each line represents 1/16 of an inch. Looking at the example above you see that the first line past the whole number **10** is 1/16, the next is 2/16 then 3/16 then 4/16 and so forth. When reading a standard tape we simplify the fraction to their lowest form instead of saying 2/16 we say 1/8 or 4/16 we say 1/4. These are the simplest form for that distance. If you need a little help when measuring just print this page out and have it with you.

## For new replacement Doors and Drawer Fronts only, do steps 1 thru 5:

Before you start measuring; review all the instruction, if you have any questions, do what most of our customers do. **CALL US 800-852-7087** anytime 24/7 talk to one of our expert consultant's they help hundreds of our customers every month with measuring.

The following steps are a proven system that will help you organized your materials to make re-checking easy and ensure your order is correct.

**Step 1: Label all Doors, Drawers, and cabinet side Panels if you are doing a complete refacing.**



**Note:** The type of hinges you use will determine your final door ordering sizes; if you plan on using your existing hinges then measure your existing door sizes not your openings

### Step 2: Measure cabinet opening heights:

Write size on the lower right corner of the label. (See Figure 1 for example).



**Step 3: Measure cabinet opening widths.** Write width on upper left corner of label. (See Figure 1) When measuring for pair doors round to the nearest 1/8" (Pair doors are when two doors are in the same opening)

**Step 4: Keep things organized by lettering all door labels:** (Use upper case letters on door openings) Place letter in center of label. **Important start left to right on all upper cabinets first, and then left to right on lower cabinets.**

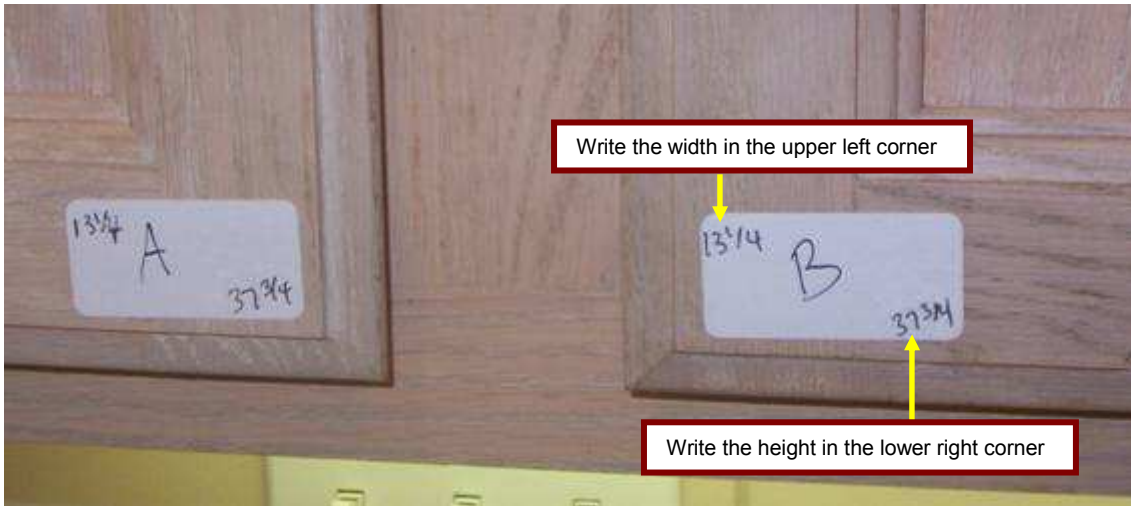


Figure #1

**Step 5: Letter drawer front labels :** ( Use lower case letters) Place letter in center of label. **Start left to right.** Using the **Door and Drawer front Worksheets** transfer all the sizes to these sheets. For a doors and drawer fronts quote **only** do one of the following. Email to [taylor.door.co@sbcglobal.net](mailto:taylor.door.co@sbcglobal.net) or Fax 209-933-9893 or call 800-852-7087.

## Measuring for reface materials

**Step 6: Measure Panel widths & heights:**

Write width on upper left corner of label & height on lower right corner of label (same as doors.)



**Step 7: Transfer all sizes to panel work sheet:**

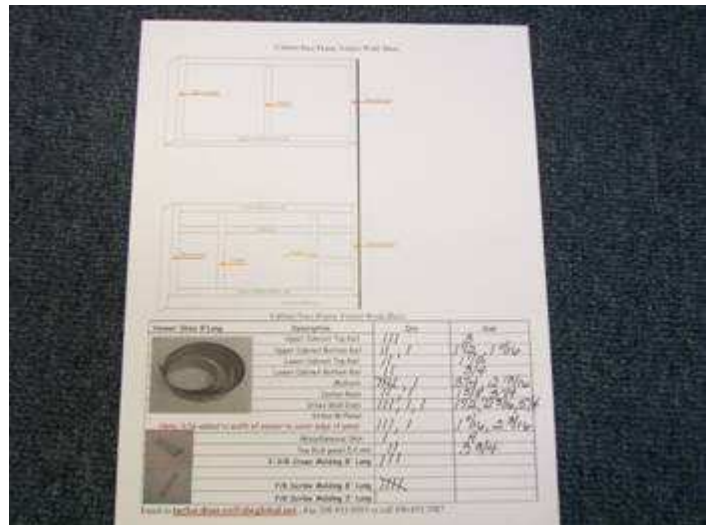


**Step 8: Measure for Veneer skins.**

Measure widths of the face frame and list sizes on the veneer worksheet.



**Step 9: Using the veneer work sheet estimate the quantity of veneers strips needed, the veneer come in 96" long lengths.**



Email to [taylor.door.co@sbcglobal.net](mailto:taylor.door.co@sbcglobal.net) or Fax 209-933-9893 or call 800-852-7087.

## Step 10: Pictures (Optional)

A most of or customers who have never done a reface before do this option; by sending us pictures we can assist you in making up their order.

Take pictures. Start with over all shots (See example below)

First Pictures: Overall shot of room multiple pictures if needed.



Take pictures: Starting at upper cabinet location (A) in sequence section by section (see pictures below)

Section 1



Section 2



Section 3



Section 4



Section 5



Section 6



Section 7



Section 8



Section 9



Section 10



Section 11



Section 12



Section 13



Example 1 possible problem area



Example 2 possible problem area



**Step 11: Email pictures to [taylor.door.co@sbcglobal.net](mailto:taylor.door.co@sbcglobal.net) ; before emailing pictures you may need to compress them. If you need help on how to do this call 1-800-852-7087**

Name:

Phone:

Required for Quote

# Door Opening Worksheet Measurements

Door Location	Cabinet opening Width	Cabinet opening Height	Write left, right or pair	Door Location	Cabinet opening Width	Cabinet opening Height	Write left, right or pair
A				AA			
B				AB			
C				AC			
D				AD			
E				AE			
F				AF			
G				AG			
H				AH			
I				AI			
J				AJ			
K				AK			
L				AL			
M				AM			
N				AN			
O				AO			
P				AP			
Q				AQ			
R				AR			
S				AS			
T				AT			
U				AU			
V				AV			
W				AW			
X				AX			
Y				AY			
Z				AZ			

**Note: Any glass ready doors**

## Notes

---



---



---

Email to [taylor.door.co@sbcglobal.net](mailto:taylor.door.co@sbcglobal.net) , Fax 209-933-9893 or call 800-852-7087

# Drawer Opening Worksheet Measurements

Drawer Location	Drawer opening Width	Drawer opening Height	Specify: False or Drawer Box
a			
b			
c			
d			
e			
f			
g			
h			
i			
j			
k			
l			
m			
n			
o			
p			
q			
r			
s			
t			
u			
v			
w			
x			
y			
z			

Drawer Location	Drawer opening Width	Drawer opening Height	Specify: False or Drawer Box
aa			
ab			
ac			
ad			
ae			
af			
ag			
ah			
ai			
aj			
ak			
al			
am			
an			
ao			
ap			
aq			
ar			
as			
at			
au			
av			
aw			
ax			
ay			
az			

**If you are replacing drawers boxes check depth of all Drawers, measure from back of the cabinet in the drawer box area to the face of the cabinet; write this depth below.**

**Notes**

---



---



---

Email to [taylor.door.co@sbcglobal.net](mailto:taylor.door.co@sbcglobal.net) , Fax 209-933-9893 or call 800-852-7087



# Side Panels 5.2mm

	Location	Width	Height
1			
2			
3			
4			
5			
6			
7			
8			
9			
10			
11			
12			
13			
14			
15			
16			
17			
18			
19			
20			
21			
22			
23			
24			
25			
26			

## Notes

---

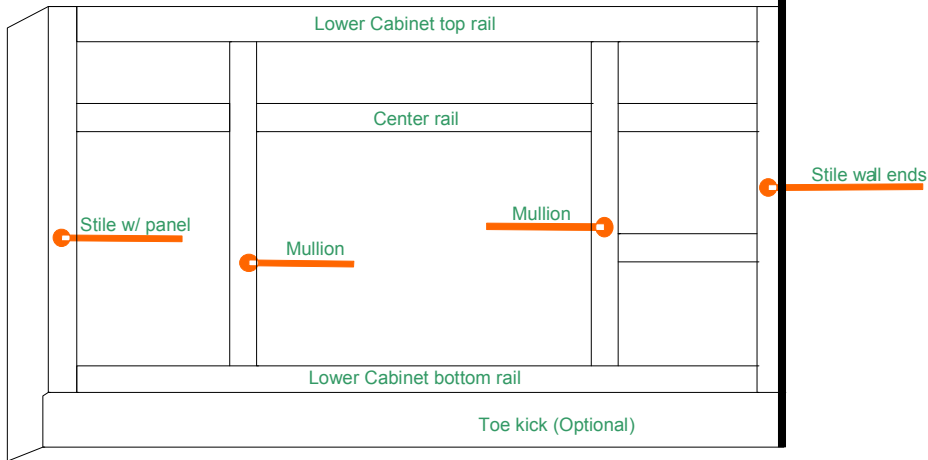
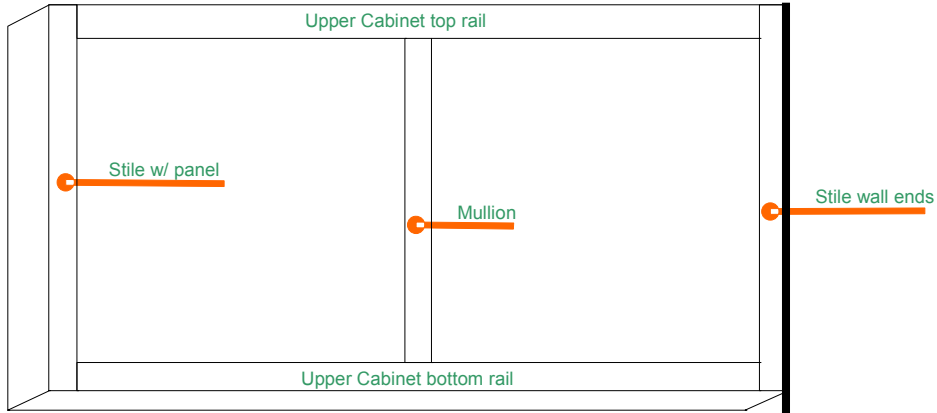
---

---




---

Email to [taylor.door.co@sbcglobal.net](mailto:taylor.door.co@sbcglobal.net) , Fax 209-933-9893 or call 800-852-7087

### Cabinet Face Frame Veneer Work Sheet



### Cabinet Face Frame Veneer Work Sheet

Veneer Skins 8' Long	Description	Qty	Size	Length
	Upper Cabinet Top Rail			96
	Upper Cabinet Bottom Rail			96
	Lower Cabinet Top Rail			96
	Lower Cabinet Bottom Rail			96
	Mullions			96
	Center Rails			96
	Stiles Wall Ends			96
	Stiles W/Panel			
<i>Note: 3/16 added to width of veneer to cover edge of panel</i>				96
	Miscellaneous Skin			96
	Toe Kick panel 5.2 mm			96
	2-3/8 Crown Molding 8' Long			96
	7/8 Scribe Molding 8' Long			96
	7/8 Scribe Molding 3' Long			36

Email to [taylor.door.co@sbcglobal.net](mailto:taylor.door.co@sbcglobal.net) , Fax 209-933-9893 or call 800-852-7087