

Taylor Cabinet Door Company

Measuring for Reface Materials

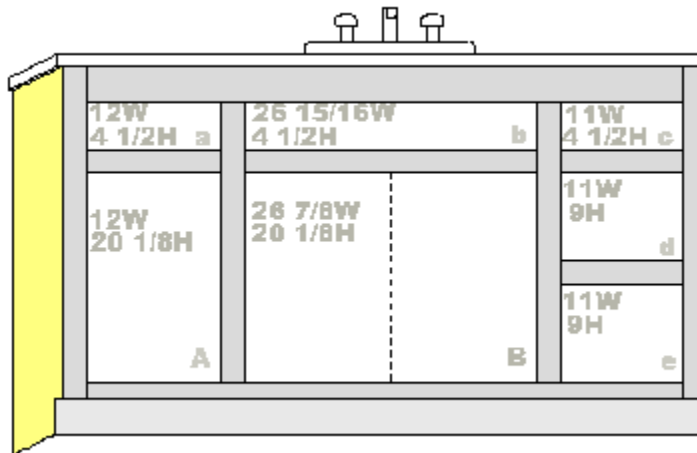
On the exposed sides of the cabinets you will be applying a special void free 3/16" thick panel material (End panel) and on the face of your cabinets a 10 mil wood veneer skin.



Measuring for the End Panels. This is the panel material that you will be using to cover the exposed ends of your cabinets. In the example cabinet below, an End Panel will need to be ordered for the left side of the cabinet. Make sure that you list this material *width* by *height*. The *width* is measured from the front of the cabinet to the wall and the *height* is from the bottom to the top. This is important to ensure that the grain will run vertical.

Reface Work Sheet

Description	Qty	Width	Height/ Length	Description	Qty	Width	Height/ Length
End Panel	1	21	34 3/4				



Measuring the veneer skins. The veneer skins are supplied in 96" lengths. Typically most of your cabinet face frame parts will be the same width. Measure the cabinet face frame widths, then, add up the lengths and list the size and quantity. Tip: Make sure you order enough material; we suggest ordering a little extra. See the **Veneer Skins Work Sheet** at the end of this file.

Measuring for Reface Materials

Measuring for Cabinet Moldings



2-3/8" Crown Molding: This molding is used for the tops of the cabinets. If your cabinets are butted to the ceiling, you need to make sure that you have enough room at the top, between the ceiling and the top of the cabinet doors. The crown will hang down 1-7/8" we recommend 2-1/2" clearance. If you have not cut and installed crown molding before, it can be tricky. Before you decide to order crown, review some websites on the internet dedicated to cutting and installing crown molding. For other options on trimming the tops of your cabinets see [Base & Scribe Molding](#).



2-3/8" Base Molding: This molding is typically used at the base of the cabinets. It also can be used at the top of the cabinets. If you are planning on using it at the top of your cabinets, make sure you have enough room (we recommend 3") between the cabinet doors and ceiling.




Scribe Molding: This molding is used to trim out the space between the wall and the cabinets, this can include the top and base of the cabinets. Our scribe molding is 7/8" wide by 1/4" thick and has a decorative fluted design.

Measuring for Reface Materials

Veneer Skins Work Sheet



 <p>Veneer Skins All veneer come 96" long</p>	Qty	Size	Description	
				Upper Cabinet Top Rail
				Upper Cabinet Bottom Rail
				Lower Cabinet Top Rail
				Lower Cabinet Bottom Rail
				Stiles W/ Panel <i>Note: Add 3/16 to the measurement to cover the end panel edge.</i>
				Stiles Wall End
				Mullions
				Center Rails
				Toe Kick (optional)
				Miscellaneous
				Miscellaneous
			2 3/8"	Crown Molding 8' long
			2 3/8"	Base Molding 8' long
		7/8"	Scribe Molding 8' long	