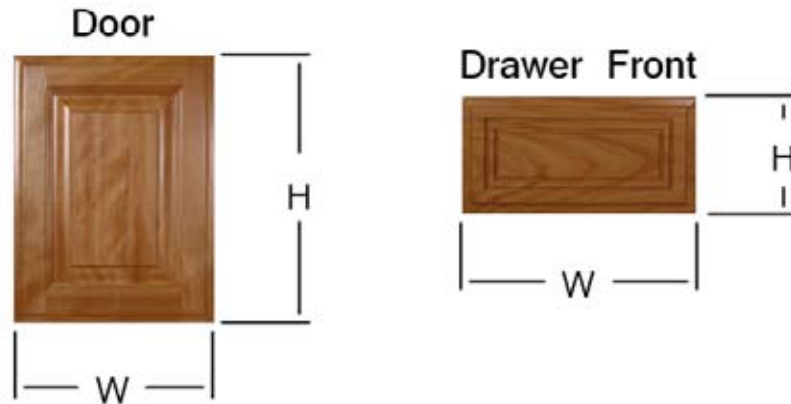
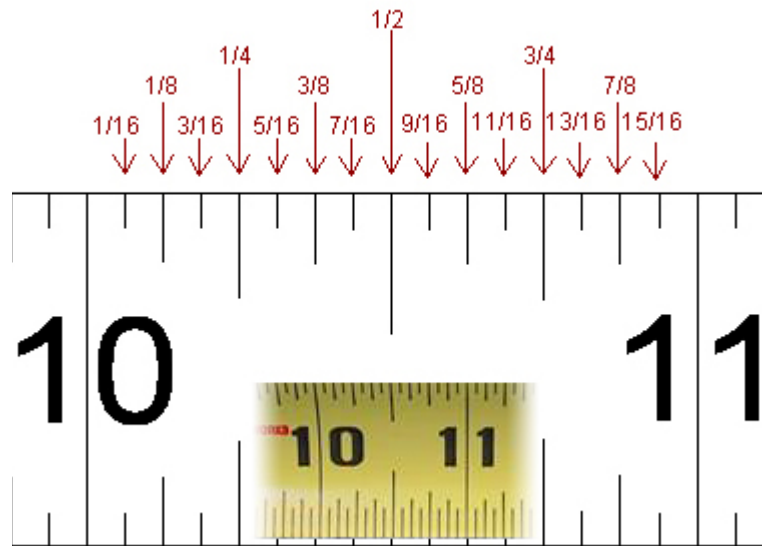


Taylor Cabinet Door Company

Measuring for Doors and Drawer Fronts using Our Hinges



When listing the sizes for doors and drawer fronts it is important that they are written width by height. Door and drawer widths are measured horizontal and heights are measured vertical (see example above). **The grain for the door panel will run vertically. The grain for the drawer fronts will run horizontally.**



All your measurements will need to be in inches and fractions of an inch and to the nearest 1/16". If you are not familiar with reading a tape measure to 1/16" and you need a little help see the illustration above.

Reading a standard tape measure: There are 15 lines between the whole numbers. Each line represents 1/16 of an inch. Looking at the example above you see that the first line past the whole number 10 is 1/16, the next is 2/16 then 3/16 and so forth. When reading a standard tape we simplify the fraction to their lowest form instead of saying 2/16 we say 1/8. This fraction represents the same distance, but 1/8 is the simplest form. If you need a little help when measuring just print this page out and have it with you.

Measuring for Doors and Drawer Fronts using Our Hinges



Fig. 1



Fig. 2



Fig. 3



Fig. 4

Before you can start measuring for your new cabinet doors you will need to decide what type of hinges you will be using. The hinges will determine the sizes of your doors. If you plan to use your existing hinges, you will need to be sure that they will work with an overlay style door. **(An overlay style door is a door that fits over the opening of the cabinet).** Figure 1 shows a 3/8 inset type door, this is an old style hinge design. We do not offer this outside detail for this type of hinge. We do offer a euro 1/2" overlay concealed hinge that is fully adjustable and removable from the cabinet and door. (Figure 2, 3 and 4). Most cabinet shops today use this type of hinge because of the ease of installation and durability. We charge \$10 per door for boring the holes. The hinges, plates and screws come free!

If you are planning on using your existing hinges and they will work with an overlay style door, then we suggest that you measure your existing doors and list them on the form. If you are replacing your hinges with the hinges we offer, you will need to follow the instructions that follow.

Material cherry

Re-face Work Sheet

Description	Qty	Width	Height/ Length	Description	Qty	Width	Height/ Length
End Panel 5.2mm	1	20 3/4	30 1/2	Veneer skin	1	4 1/4	96
Scribe	2	3/4	36 1/4	Veneer skin	1	4 1/4	96
Veneer skin	1	1 13/16	96				
	2	2"	96				
	1	2 3/16	96				
	2	3 1/4	96				

Finish Door sizes

Item	Qty	Width	Height	Hinges yes/no	Hinge Side
A	1	14 1/4	17 3/4	Yes	N/A
B	1	14 1/4	17 3/4		N/A
C	1	14 1/4	17 3/4		N/A
D	1	14 1/4	17 3/4		N/A

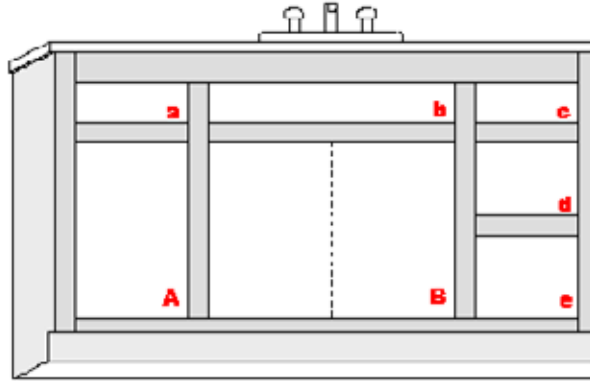
Finish Drawer sizes

Item	Qty	Width	Height	Drawer box / False Kit
a	1	30 3/4	5 5/8	False KIT
b	1	30 3/4	5 5/8	False KIT
c	1	12 3/4	5 5/8	None
d	1	12 3/4	5 5/8	None
e	1	12 3/4	10 3/4	None

Taylor Company www.taylorcabinetdoor.com

When ordering your materials you want to make sure you order everything correctly and in the right quantity. We recommend that you draw a sketch of each cabinet and measure the cabinet openings, then list that information on your sketch. This will allow you to **double check all your work!** We offer a re-face worksheet form that will help. (See example above.) The form is available at the end of this file.

Measuring for Doors and Drawer Fronts using Our Hinges



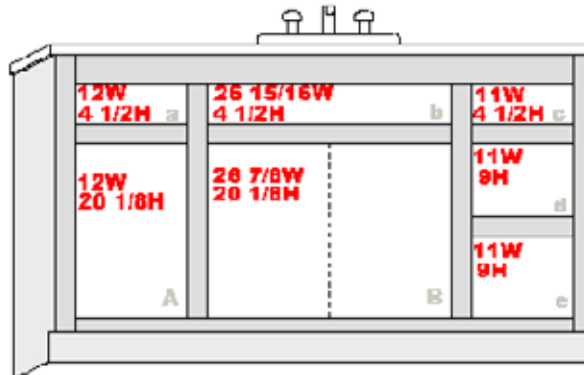
Final Door sizes

Final Drawer sizes

Item	Qty	Width	Height	Hinges yes/no	Hinge Side	Item	Qty	Width	Height	Drawer box / False Kit
A						a				
B						b				
						c				
						d				
						e				

Working with one cabinet at a time, draw a sketch of that cabinet in the grid space on the center of the form. To keep things organized, label the cabinet openings on your drawing and on the form below. Use capital letters for the doors and lower case letters for the drawers.

If you are ordering hinges with your doors you will need to follow these instructions. Measure the *openings* of the cabinet and list them on your drawing.



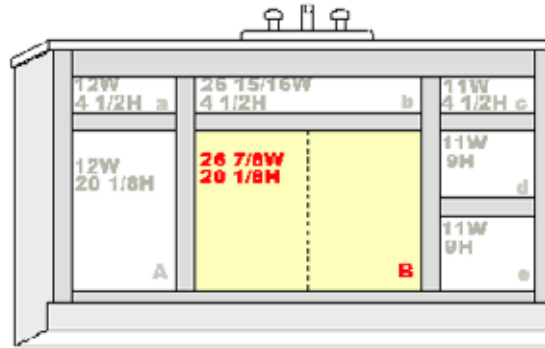
Final Door sizes

Final Drawer sizes

Item	Qty	Width	Height	Hinges yes/no	Hinge Side	Item	Qty	Width	Height	Drawer box / False Kit
A	1	13	21 1/8			a	1	13	5 1/2	
B						b	1	27 15/16	5 1/2	
						c	1	12	5 1/2	
						d	1	12	10	
						e	1	12	10	

Then, for all *single* doors and drawers add 1" to the width and height and write these sizes in the corresponding location on the form below, this will be the door and drawer front size you will be ordering. Example drawer location (a) Width $12 + 1 = 13$ Height $4 \frac{1}{2} + 1 = 5 \frac{1}{2}$

Measuring for Doors and Drawer Fronts using Our Hinges

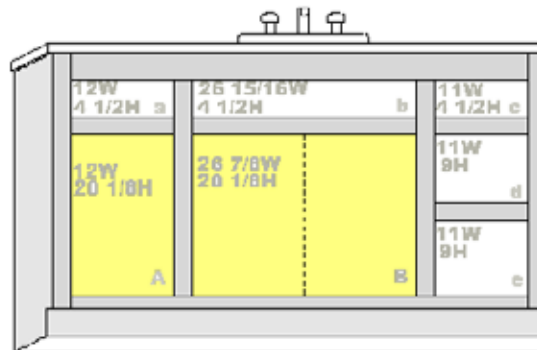


Final Door sizes

Final Drawer sizes

Item	Qty	Width	Height	Hinges yes/no	Hinge Side	Item	Qty	Width	Height	Drawer box / False Kit
A	1	13	21 1/8			a	1	13	5 1/2	
B	2	13 15/16	21 1/8			b	1	27 15/16	5 1/2	
						c	1	12	5 1/2	
						d	1	12	10	
						e	1	12	10	

The cabinet opening that we highlighted here (*location B*), will need a set of pair doors (*2 doors in the same opening*) Round all pair door openings to the nearest 1/8th of an inch or greater, add 1" to the opening width then divide by 2, this will give you the width of each door. **Make sure you add the 1" before you divide.** To figure the heights just add 1" to the opening height. Example: $W = 26 \frac{7}{8} + 1 = 27 \frac{7}{8} \div 2 = 13 \frac{15}{16}$ width of each door. $H = 20 \frac{1}{8} + 1 = 21 \frac{1}{8}$ height of each door. Make sure in the Qty column below you list **2 doors**.



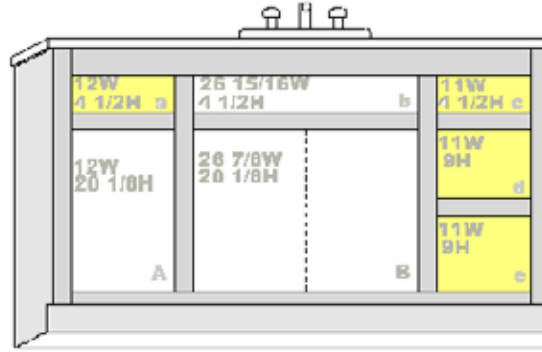
Final Door sizes

Final Drawer sizes

Item	Qty	Width	Height	Hinges yes/no	Hinge Side	Item	Qty	Width	Height	Drawer box / False Kit
A	1	13	21 1/8	yes	Left	a	1	13	5 1/2	
B	2	13 15/16	21 1/8	yes	pair	b	1	27 15/16	5 1/2	
						c	1	12	5 1/2	
						d	1	12	10	
						e	1	12	10	

In the Hinges column, enter yes for hinges. The Hinge Side is for the side the hinges will be on. This will determine the direction the door will open. When you are ordering doors with hinges you will have four options **Right, Left, Pair** and **Blank** for no hinges. **Indicate hinge side for single arch doors only.**

Measuring for Doors and Drawer Fronts using Our Hinges

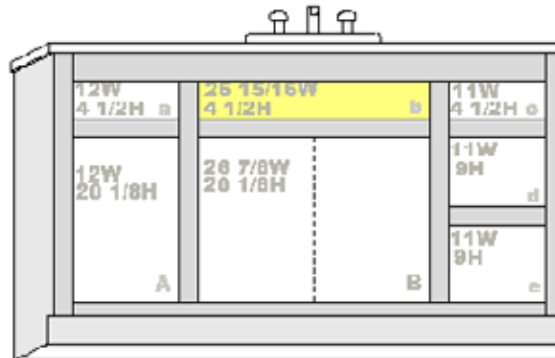


Final Door sizes

Final Drawer sizes

Item	Qty	Width	Height	Hinges yes/no	Hinge Side	Item	Qty	Width	Height	Drawer box / False Kit
A	1	13	21 1/8	yes	N/A	a	1	13	5 1/2	Drawer Box
B	2	13 15/16	21 1/8	yes	pair	b	1	27 15/16	5 1/2	
						c	1	12	5 1/2	Drawer Box
						d	1	12	10	Drawer Box
						e	1	12	10	Drawer Box

Next, fill out the additional ordering information for the drawers. Your options are Drawer box, or False Attachment Kit. In the example cabinet below we will be replacing all the drawer boxes for items (a, c, d, e) so we entered **Drawer box** on the form. The width and height sizes of the drawer boxes will be based off the drawer front sizes you have ordered. The length of our standard drawer boxes is 20" long.



Final Door sizes

Final Drawer sizes

Item	Qty	Width	Height	Hinges yes/no	Hinge Side	Item	Qty	Width	Height	Drawer box / False Kit
A	1	13	21 1/8	yes	N/A	a	1	13	5 1/2	Drawer Box
B	2	13 15/16	21 1/8	yes	pair	b	1	27 15/16	5 1/2	False Kit
						c	1	12	5 1/2	Drawer Box
						d	1	12	10	Drawer Box
						e	1	12	10	Drawer Box

For the item listed in location (b) we wrote False Kit. The drawer in this location has a sink above it. There is no drawer box so the drawer front will need to be attached to the cabinet. Attaching a drawer front with the counter top installed can be a problem. We have developed an attaching kit to simplify this job. **See following page.**

Measuring for Doors and Drawer Fronts using Our Hinges



False Drawer Attaching Kit

We attach blocks to the back of the drawer front 1/2" in from the sides at each end, and then attach another off-set block on top. All that is required to install the drawer front is turning the locking blocks inwards, Place the drawer front in the opening, then reach under the inside and turn the locking blocks outwards, this locks the drawer in place. Tip: one advantage with this system is if you ever need to clean the space between the drawer front and the cabinet you can easily remove it.

Measurement Work Sheet

Description	Qty	Width	Height/ Length	Description	Qty	Width	Height/ Length

Finish Door sizes

Item	Qty	Width	Height	Hinges yes/no	Hinge Side	Item	Qty	Width	Length	Drawer box / False Kit

Finish Drawer sizes
