



Taylor Cabinet Door Company

Instructions for Measuring New Cabinet Doors and Cabinet Refacing materials

To get a **free quote** print the following instructions and follow the simple steps below. The true value of our system over all the others is that we offer a pre-cut refacing kit. By having the materials pre-cut it will reduce the **work, skill and tools needed to complete your project.**



Example of Re-facing Kit

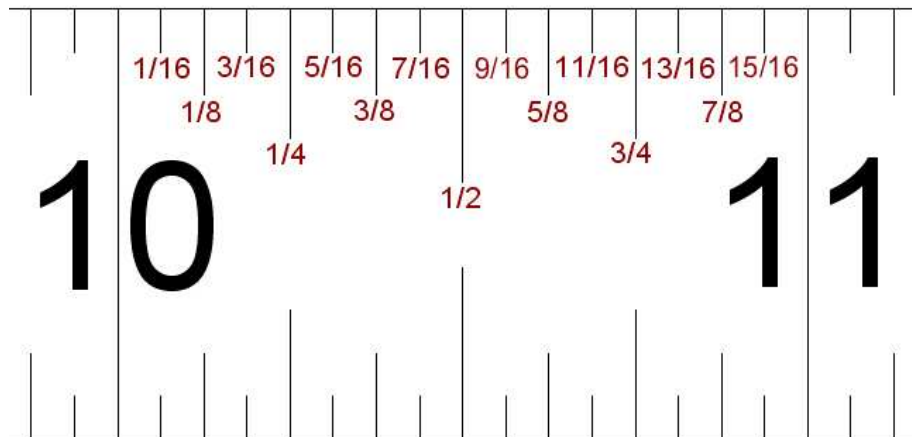


Makes installation a breeze

Materials needed for Measuring

- **Measuring Worksheets - Doors, Drawers, Panels, Veneers & moldings sheets (enclose worksheet below)**
- **Labeling Tags**
- **Tape Measure**
- **Pen or Pencil**
- **Small Step Ladder**
- **Digital Camera (Optional)**

All your measurements will need to be in inches and fractions of an inch and to the nearest 1/16". If you are not familiar with reading a tape measure to 1/16" and you need a little help see the illustration below.



Reading a standard tape measure: There are 15 lines between the whole numbers. Each line represents 1/16 of an inch. Looking at the example above you see that the first line past the whole number 10 is 1/16, the next is 2/16 then 3/16 and so forth. When reading a standard tape we simplify the fraction to their lowest form instead of saying 2/16 we say 1/8. This fraction represents the same distance, but 1/8 is the simplest form. If you need a little help when measuring just print this page out and have it with you.

For new cabinet doors only steps 1 thru 5:

Step 1: Label all Doors, Drawers, Panels, etc.....



Step 2: Measure cabinet opening heights:

Write size on the lower right corner of the label. (See Figure 1 for example).



Step 3: Measure cabinet opening widths. Write width on upper left corner of label. (See Figure 1) When measuring for pair doors round to the nearest 1/8" (Pair doors are when two doors are in the same opening)

Step 4: Keep things organized by lettering all door labels: (Use upper case letters on door openings) Place letter in center of label. **Important start left to right on upper cabinets first, and then left to right on lower cabinets.**

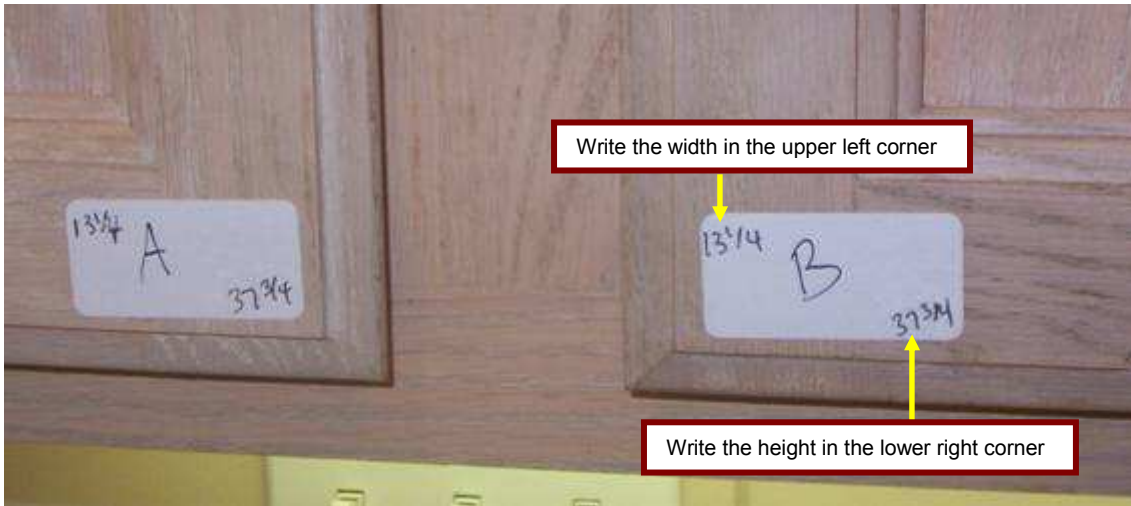


Figure #1

Step 5: Letter drawer front labels : (Use lower case letters) Place letter in center of label. **Start left to right.** Using the **Door, Drawer Worksheets** transfer all sizes to sheets. For doors and drawers quote **only** you can Email to taylor.door.co@sbcglobal.net or Fax 209-933-9893 or call 800-852-7087.

Measuring for reface materials

Step 6: Measure Panel widths & heights:

Write width on upper left corner of label & height on lower right corner of label (same as doors.)



Step 7: Transfer all sizes to panel work sheet:

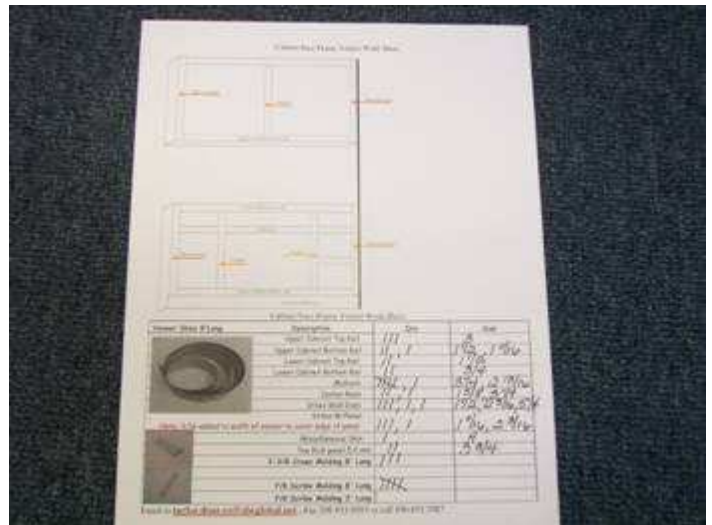


Step 8: Measure for Veneer skins.

Measure widths of the face frame and list sizes on the veneer worksheet.



Step 9: Using the veneer work sheet estimate the quantity of veneers strips needed, the veneer come in 96" long lengths.



Email to taylor.door.co@sbcglobal.net or Fax 209-933-9893 or call 800-852-7087.

Step 10: Pictures (Optional)

Take pictures. Start with over all shots (See example below)

First Pictures: Overall shot of room multiple pictures if needed.



Take pictures: Starting at upper cabinet location (A) in sequence section by section (see pictures below)



Section 10



Section 11



Section 12



Section 13



Example 1 possible problem area



Example 2 possible problem area



Step 11: Email pictures; before emailing pictures you will need to compress them. If you need help on how to do this call 1-800-852-7087

Name:

Phone:

Required for Quote

Door Opening Worksheet Measurements

Door Location	Cabinet opening Width	Cabinet opening Height	Write left, right or pair	Door Location	Cabinet opening Width	Cabinet opening Height	Write left, right or pair
A				AA			
B				AB			
C				AC			
D				AD			
E				AE			
F				AF			
G				AG			
H				AH			
I				AI			
J				AJ			
K				AK			
L				AL			
M				AM			
N				AN			
O				AO			
P				AP			
Q				AQ			
R				AR			
S				AS			
T				AT			
U				AU			
V				AV			
W				AW			
X				AX			
Y				AY			
Z				AZ			

Note: Any glass ready doors

Notes

Email to taylor.door.co@sbcglobal.net , Fax 209-933-9893 or call 800-852-7087

Drawer Opening Worksheet Measurements

Drawer Location	Drawer opening Width	Drawer opening Height	Specify: False or Drawer Box
a			
b			
c			
d			
e			
f			
g			
h			
i			
j			
k			
l			
m			
n			
o			
p			
q			
r			
s			
t			
u			
v			
w			
x			
y			
z			

Drawer Location	Drawer opening Width	Drawer opening Height	Specify: False or Drawer Box
aa			
ab			
ac			
ad			
ae			
af			
ag			
ah			
ai			
aj			
ak			
al			
am			
an			
ao			
ap			
aq			
ar			
as			
at			
au			
av			
aw			
ax			
ay			
az			

If you are replacing drawers boxes check depth of all Drawers, measure from back of the cabinet in the drawer box area to the face of the cabinet; write this depth below.

Notes

Email to taylor.door.co@sbcglobal.net , Fax 209-933-9893 or call 800-852-7087

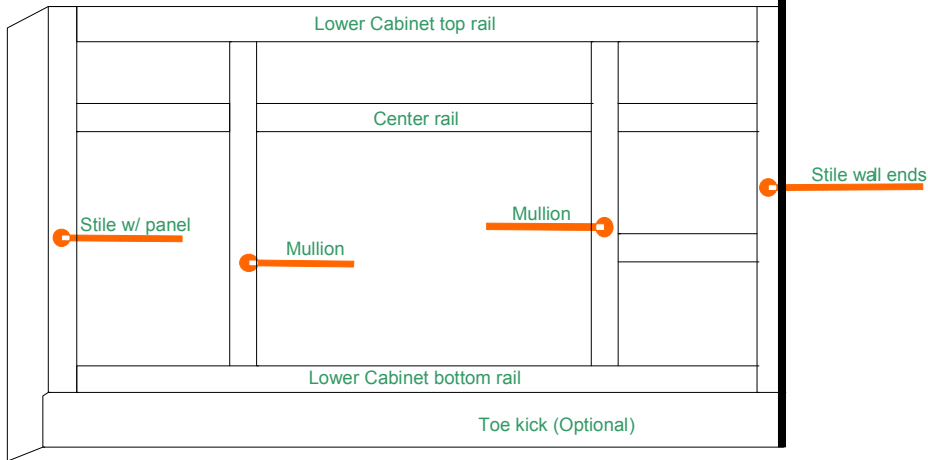
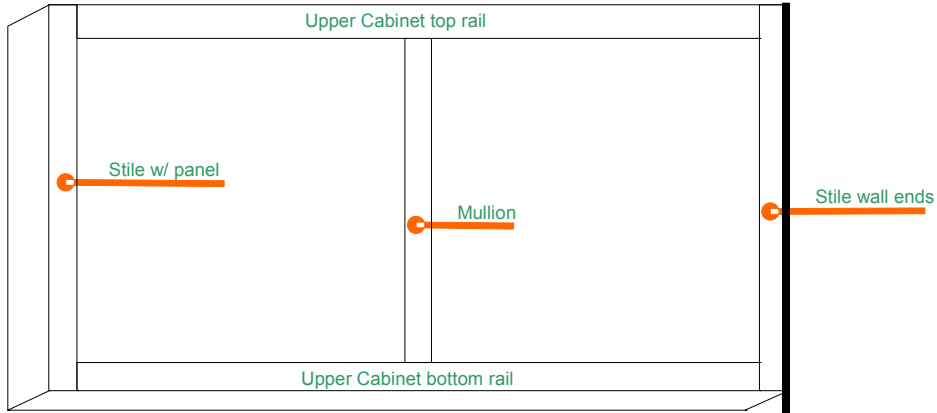
Side Panels 5.2mm

	Location	Width	Height
1			
2			
3			
4			
5			
6			
7			
8			
9			
10			
11			
12			
13			
14			
15			
16			
17			
18			
19			
20			
21			
22			
23			
24			
25			
26			




Notes

Email to taylor.door.co@sbcglobal.net , Fax 209-933-9893 or call 800-852-7087

Cabinet Face Frame Veneer Work Sheet



Cabinet Face Frame Veneer Work Sheet

Veneer Skins 8' Long	Description	Qty	Size
	Upper Cabinet Top Rail		
	Upper Cabinet Bottom Rail		
	Lower Cabinet Top Rail		
	Lower Cabinet Bottom Rail		
	Mullions		
	Center Rails		
	Stiles Wall Ends		
	Stiles W/Panel		
<p style="color: red; font-style: italic;">Note: 3/16 added to width of veneer to cover edge of panel</p>			
	Miscellaneous Skin		
	Toe Kick panel 5.2 mm		
	2-3/8 Crown Molding 8' Long		
	7/8 Scribe Molding 8' Long		
	7/8 Scribe Molding 3' Long		

Email to taylor.door.co@sbcglobal.net , Fax 209-933-9893 or call 800-852-7087